

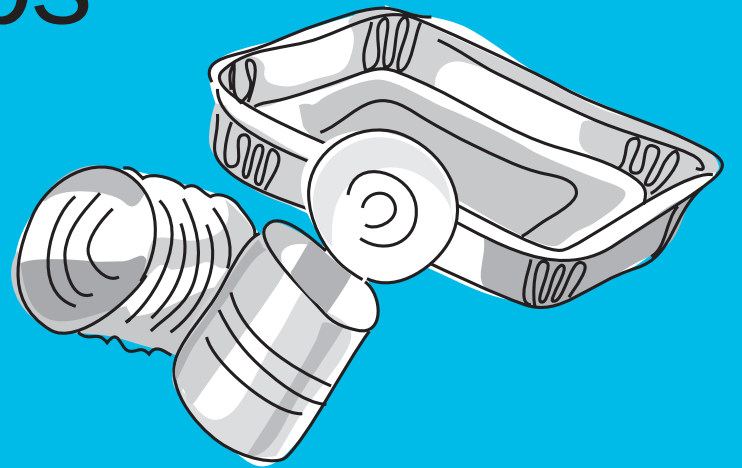
Containers

**NO BAGS
IN THIS
BIN**

Juice boxes,
milk cartons
and paper cups



Metal cans,
foil and trays



Glass bottles
and jars

All colors



Plastic bottles,
jugs and jars,
tubs, trays
and cups

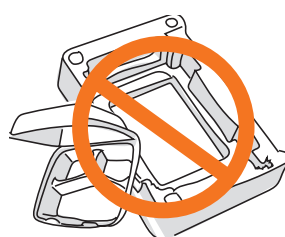
2.5 gal or less • No foam



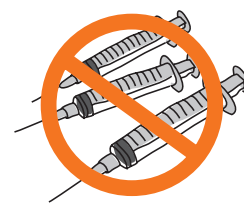
No:



NO non-container items



NO foam items



NO medical waste